

YUNIKU DESIGN STUDIO

METAL DOORS



CATALOG 2026

TABLE OF CONTENT

- * LIMITATIONS OF WOODEN DOORS
- * ADVANTAGES OF METAL DOORS
- * WARRANTY PAGE
- * SECTION DRAWING
- * STANDARD DOOR SIZES
- * OUR PRODUCTS
- * COLOR SHADES
- * HARDWARE
- * CERTIFICATION
- * CONTACT US



LIMITATIONS OF WOODEN DOORS



- * The Process of making a wooden door is complicated and not transparent.
- * There is no check of quality or price. There is inconvenience and the process has multiple hassles.
- * Wooden door harm the environment by contributing to the problem of excessive deforestation

BURMA TEAK

Not easily available
Lack quality
Gets easily damaged by water or sunlight

AKASH MONI

Not as strong as it is claimed
Lack quality
Not termite resistant

NEEM

Gets easily damaged by water or sunlight

GAMAR

Lack quality
Not termite resistant

SAL

Very costly
Not termite resistant



ADVANTAGES OF METAL DOORS



SECURITY

YDS Doors are 4 times more secure than wooden doors.



MAINTENANCE FREE

YDS Doors are 7x more resistant to warpage than wooden



WEATHER PROOF

High quality of metal lasts long & endures every weather condition



VARIETY OF DESIGNS

Wide array of styles that enhances every modern home decor



TERMITE RESISTANT

Metal doors are naturally termite resistant



VALUE FOR MONEY

Superior products at resonable prices



LONGETIVITY

YDS have 5yrs warranty on paint & polish



ENVIRONMENT FRIENDLY

100% Recyclable and save trees



HIGH QUALITY FINISH

The finish of our doors is 12x to wooden doors

UNBEATABLE SECURITY WITH UNPARALLELED QUALITY



5 YEAR WARRANTY

- Manufacturing defects and termite infestation.
- Color and texture fading



1 YEAR WARRANTY

- All accessories other than lock

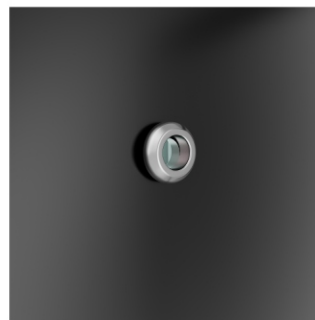
Door Components



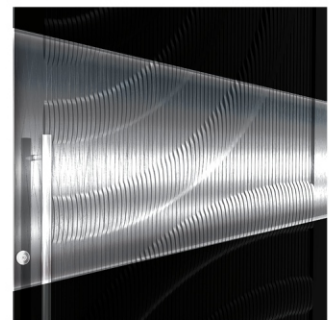
PRIMARY LOCK



HINGES



EYEHOLE



WEATHER RESISTANT COATING



DOOR HANDLE

STANDARD DOOR SIZES

| WIDTH | HEIGHT | | | | | | | | | | | |
|-------|--------|------|------|------|------|------|------|------|------|------|------|------|
| | 1905 | 1950 | 1960 | 2050 | 2057 | 2062 | 2075 | 2100 | 2134 | 2287 | 2375 | 2439 |
| 760 | | ✓ | | | ✓ | | | ✓ | ✓ | ✓ | | ✓ |
| 722 | | | ✓ | | | ✓ | | | | | | |
| 848 | | | ✓ | | | ✓ | | ✓ | | | | |
| 900 | | | | ✓ | ✓ | | | ✓ | | | | |
| 915 | ✓ | ✓ | | | ✓ | | ✓ | ✓ | ✓ | ✓ | | ✓ |
| 925 | | | | | | ✓ | | | | | | |
| 965 | ✓ | | | | | | | | ✓ | | | |
| 990 | | | | | | | | | | | | ✓ |
| 1000 | | | | ✓ | | ✓ | | ✓ | | | | |
| 1016 | ✓ | | | | ✓ | | | | | | | |
| 1050 | | ✓ | | ✓ | ✓ | | | ✓ | | | | |
| 1067 | | | | ✓ | ✓ | | | | ✓ | ✓ | | ✓ |
| 1077 | | | | | | ✓ | | | | | | |
| 1100 | | | | | ✓ | | | ✓ | | | | |
| 1200 | | | | | ✓ | ✓ | | ✓ | ✓ | ✓ | | ✓ |

YUNIKU DESIGN STUDIO

ECO SERIES DOORS





ITEM CODE : YDS-ECO-2501

| | |
|---------------------|---|
| Size | 1050x2100mm (3.5x7ft) |
| Material | Mild Steel, Stainless Steel-304. |
| Accessories | Lock, SS Hinges, Handle, SS Door Stopper, Mosquito Mesh |
| Chargeable Features | Door Frame(Chaukhat), Electric Lock |



ITEM CODE : YDS-ECO-2502

| | |
|---------------------|---|
| Size | 1050x2100mm (3.5x7ft) |
| Material | Mild Steel, Stainless Steel-304. |
| Accessories | Lock, SS Hinges, Handle, SS Door Stopper, Mosquito Mesh |
| Chargeable Features | Door Frame(Chaukhat), Electric Lock |



ITEM CODE : YDS-ECO-2503

| | |
|---------------------|---|
| Size | 1050x2100mm (3.5x7ft) |
| Material | Mild Steel, Stainless Steel-304. |
| Accessories | Lock, SS Hinges, Handle, SS Door Stopper, Mosquito Mesh |
| Chargeable Features | Door Frame(Chaukhat), Electric Lock |



ITEM CODE : YDS-ECO-2504

| | |
|---------------------|---|
| Size | 1050x2100mm (3.5x7ft) |
| Material | Mild Steel, Stainless Steel-304. |
| Accessories | Lock, SS Hinges, Handle, SS Door Stopper, Mosquito Mesh |
| Chargeable Features | Door Frame(Chaukhat), Electric Lock |

YUNIKU DESIGN STUDIO

PRIME SERIES *DOORS*





ITEM CODE : YDS-PRI-2501

| | |
|---------------------|---|
| Size | 1050x2100mm (3.5x7ft) |
| Material | Mild Steel, Stainless Steel-304. |
| Accessories | Lock, SS Hinges, Handle, SS Door Stopper, Mosquito Mesh |
| Chargeable Features | Door Frame(Chaukhat), Electric Lock |

PRIME SERIES



ITEM CODE : YDS-PRI-2502

| | |
|---------------------|---|
| Size | 1050x2100mm (3.5x7ft) |
| Material | Mild Steel, Stainless Steel-304. |
| Accessories | Lock, SS Hinges, Handle, SS Door Stopper, Mosquito Mesh |
| Chargeable Features | Door Frame(Chaukhat), Electric Lock |

PRIME SERIES



ITEM CODE : YDS-PRI-2503

| | |
|---------------------|---|
| Size | 1050x2100mm (3.5x7ft) |
| Material | Mild Steel, Stainless Steel-304. |
| Accessories | Lock, SS Hinges, Handle, SS Door Stopper, Mosquito Mesh |
| Chargeable Features | Door Frame(Chaukhat), Electric Lock |



ITEM CODE : YDS-PRI-2504

| | |
|---------------------|---|
| Size | 1050x2100mm (3.5x7ft) |
| Material | Mild Steel, Stainless Steel-304. |
| Accessories | Lock, SS Hinges, Handle, SS Door Stopper, Mosquito Mesh |
| Chargeable Features | Door Frame(Chaukhat), Electric Lock |

PRIME SERIES



ITEM CODE : YDS-PRI-2505

| | |
|---------------------|---|
| Size | 1050x2100mm (3.5x7ft) |
| Material | Mild Steel, Stainless Steel-304. |
| Accessories | Lock, SS Hinges, Handle, SS Door Stopper, Mosquito Mesh |
| Chargeable Features | Door Frame(Chaukhat), Electric Lock |

PRIME SERIES



ITEM CODE : YDS-PRI-2506

| | |
|---------------------|---|
| Size | 1050x2100mm (3.5x7ft) |
| Material | Mild Steel, Stainless Steel-304. |
| Accessories | Lock, SS Hinges, Handle, SS Door Stopper, Mosquito Mesh |
| Chargeable Features | Door Frame(Chaukhat), Electric Lock |

PRIME SERIES



ITEM CODE : YDS-PRI-2507

| | |
|---------------------|---|
| Size | 1050x2100mm (3.5x7ft) |
| Material | Mild Steel, Stainless Steel-304. |
| Accessories | Lock, SS Hinges, Handle, SS Door Stopper, Mosquito Mesh |
| Chargeable Features | Door Frame(Chaukhat), Electric Lock |



ITEM CODE : YDS-PRI-2508

| | |
|---------------------|---|
| Size | 1050x2100mm (3.5x7ft) |
| Material | Mild Steel, Stainless Steel-304. |
| Accessories | Lock, SS Hinges, Handle, SS Door Stopper, Mosquito Mesh |
| Chargeable Features | Door Frame(Chaukhat), Electric Lock |



ITEM CODE : YDS-PRI-2509

| | |
|---------------------|---|
| Size | 1050x2100mm (3.5x7ft) |
| Material | Mild Steel, Stainless Steel-304. |
| Accessories | Lock, SS Hinges, Handle, SS Door Stopper, Mosquito Mesh |
| Chargeable Features | Door Frame(Chaukhat), Electric Lock |

PRIME SERIES



ITEM CODE : YDS-PRI-2510

| | |
|---------------------|---|
| Size | 1050x2100mm (3.5x7ft) |
| Material | Mild Steel, Stainless Steel-304. |
| Accessories | Lock, SS Hinges, Handle, SS Door Stopper, Mosquito Mesh |
| Chargeable Features | Door Frame(Chaukhat), Electric Lock |

PRIME SERIES



ITEM CODE : YDS-PRI-2511

| | |
|---------------------|---|
| Size | 1050x2100mm (3.5x7ft) |
| Material | Mild Steel, Stainless Steel-304. |
| Accessories | Lock, SS Hinges, Handle, SS Door Stopper, Mosquito Mesh |
| Chargeable Features | Door Frame(Chaukhat), Electric Lock |

PRIME SERIES



ITEM CODE : YDS-PRI-2512

| | |
|---------------------|---|
| Size | 1050x2100mm (3.5x7ft) |
| Material | Mild Steel, Stainless Steel-304. |
| Accessories | Lock, SS Hinges, Handle, SS Door Stopper, Mosquito Mesh |
| Chargeable Features | Door Frame(Chaukhat), Electric Lock |

PRIME SERIES



ITEM CODE : YDS-PRI-2513

| | |
|---------------------|---|
| Size | 1050x2100mm (3.5x7ft) |
| Material | Mild Steel, Stainless Steel-304. |
| Accessories | Lock, SS Hinges, Handle, SS Door Stopper, Mosquito Mesh |
| Chargeable Features | Door Frame(Chaukhat), Electric Lock |



ITEM CODE : YDS-PRI-2514

| | |
|---------------------|---|
| Size | 1050x2100mm (3.5x7ft) |
| Material | Mild Steel, Stainless Steel-304. |
| Accessories | Lock, SS Hinges, Handle, SS Door Stopper, Mosquito Mesh |
| Chargeable Features | Door Frame(Chaukhat), Electric Lock |

PRIME SERIES



ITEM CODE : YDS-PRI-2515

| | |
|---------------------|---|
| Size | 1050x2100mm (3.5x7ft) |
| Material | Mild Steel, Stainless Steel-304. |
| Accessories | Lock, SS Hinges, Handle, SS Door Stopper, Mosquito Mesh |
| Chargeable Features | Door Frame(Chaukhat), Electric Lock |

PRIME SERIES



ITEM CODE : YDS-PRI-2516

| | |
|---------------------|---|
| Size | 1050x2100mm (3.5x7ft) |
| Material | Mild Steel, Stainless Steel-304. |
| Accessories | Lock, SS Hinges, Handle, SS Door Stopper, Mosquito Mesh |
| Chargeable Features | Door Frame(Chaukhat), Electric Lock |

PRIME SERIES



ITEM CODE : YDS-PRI-2517

| | |
|---------------------|---|
| Size | 1050x2100mm (3.5x7ft) |
| Material | Mild Steel, Stainless Steel-304. |
| Accessories | Lock, SS Hinges, Handle, SS Door Stopper, Mosquito Mesh |
| Chargeable Features | Door Frame(Chaukhat), Electric Lock |

PRIME SERIES



ITEM CODE : YDS-PRI-2518

| | |
|---------------------|---|
| Size | 1050x2100mm (3.5x7ft) |
| Material | Mild Steel, Stainless Steel-304. |
| Accessories | Lock, SS Hinges, Handle, SS Door Stopper, Mosquito Mesh |
| Chargeable Features | Door Frame(Chaukhat), Electric Lock |

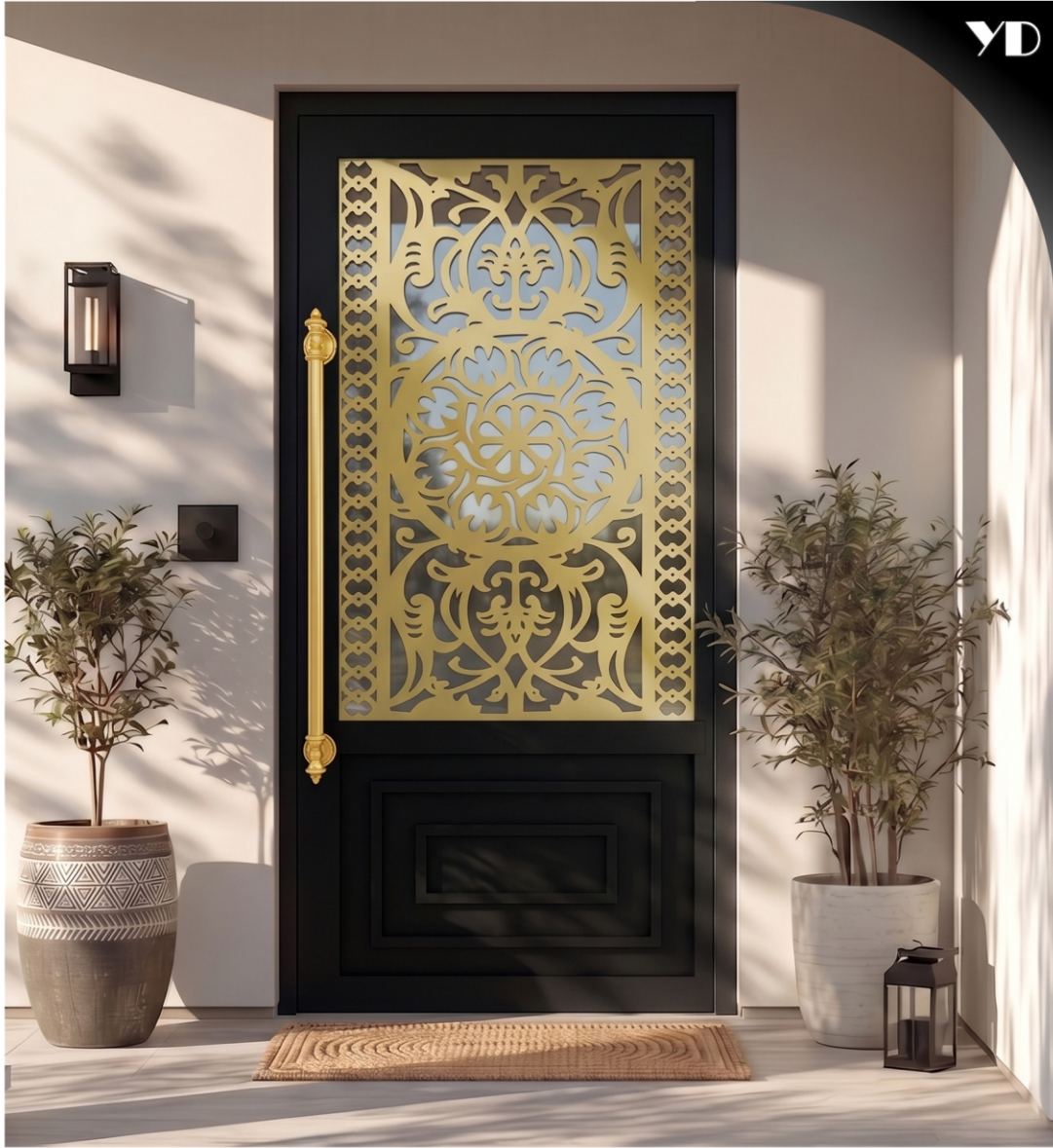
PRIME SERIES



ITEM CODE : YDS-PRI-2519

| | |
|---------------------|---|
| Size | 1050x2100mm (3.5x7ft) |
| Material | Mild Steel, Stainless Steel-304. |
| Accessories | Lock, SS Hinges, Handle, SS Door Stopper, Mosquito Mesh |
| Chargeable Features | Door Frame(Chaukhat), Electric Lock |

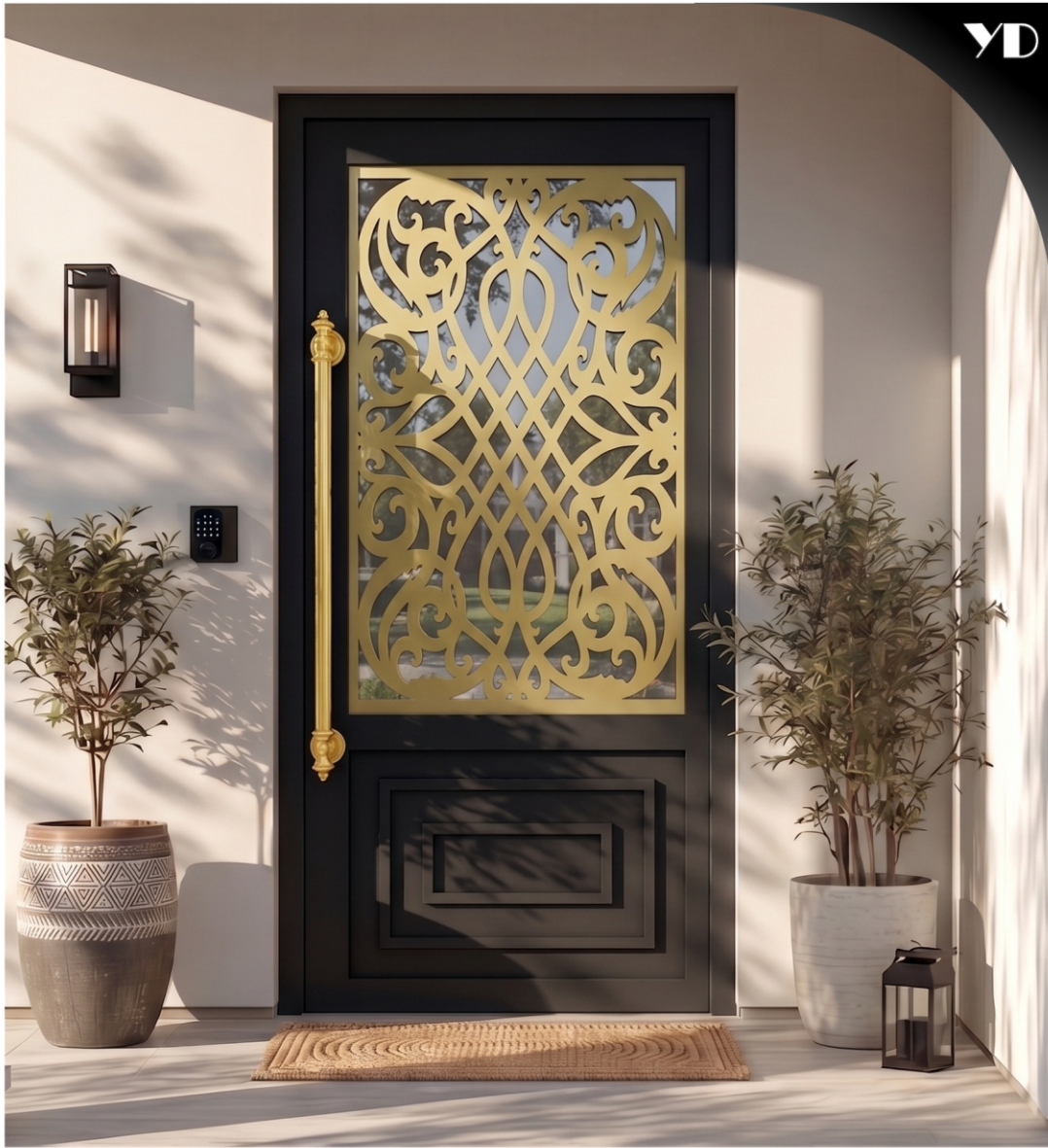
PRIME SERIES



ITEM CODE : YDS-PRI-2520

| | |
|---------------------|---|
| Size | 1050x2100mm (3.5x7ft) |
| Material | Mild Steel, Stainless Steel-304. |
| Accessories | Lock, SS Hinges, Handle, SS Door Stopper, Mosquito Mesh |
| Chargeable Features | Door Frame(Chaukhat), Electric Lock |

PRIME SERIES



ITEM CODE : YDS-PRI-2521

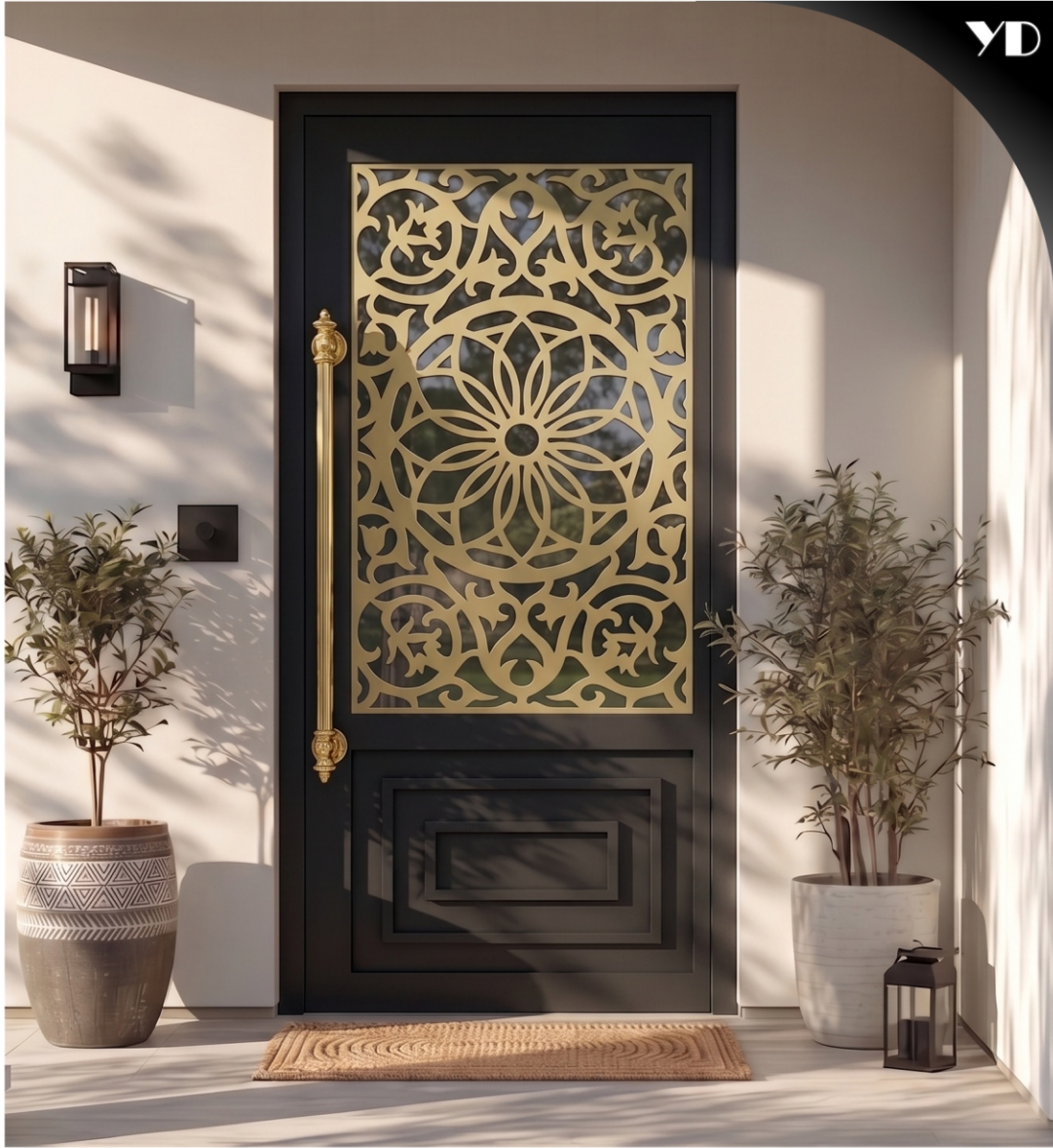
| | |
|---------------------|---|
| Size | 1050x2100mm (3.5x7ft) |
| Material | Mild Steel, Stainless Steel-304. |
| Accessories | Lock, SS Hinges, Handle, SS Door Stopper, Mosquito Mesh |
| Chargeable Features | Door Frame(Chaukhat), Electric Lock |



ITEM CODE : YDS-PRI-2522

| | |
|---------------------|---|
| Size | 1050x2100mm (3.5x7ft) |
| Material | Mild Steel, Stainless Steel-304. |
| Accessories | Lock, SS Hinges, Handle, SS Door Stopper, Mosquito Mesh |
| Chargeable Features | Door Frame(Chaukhat), Electric Lock |

PRIME SERIES

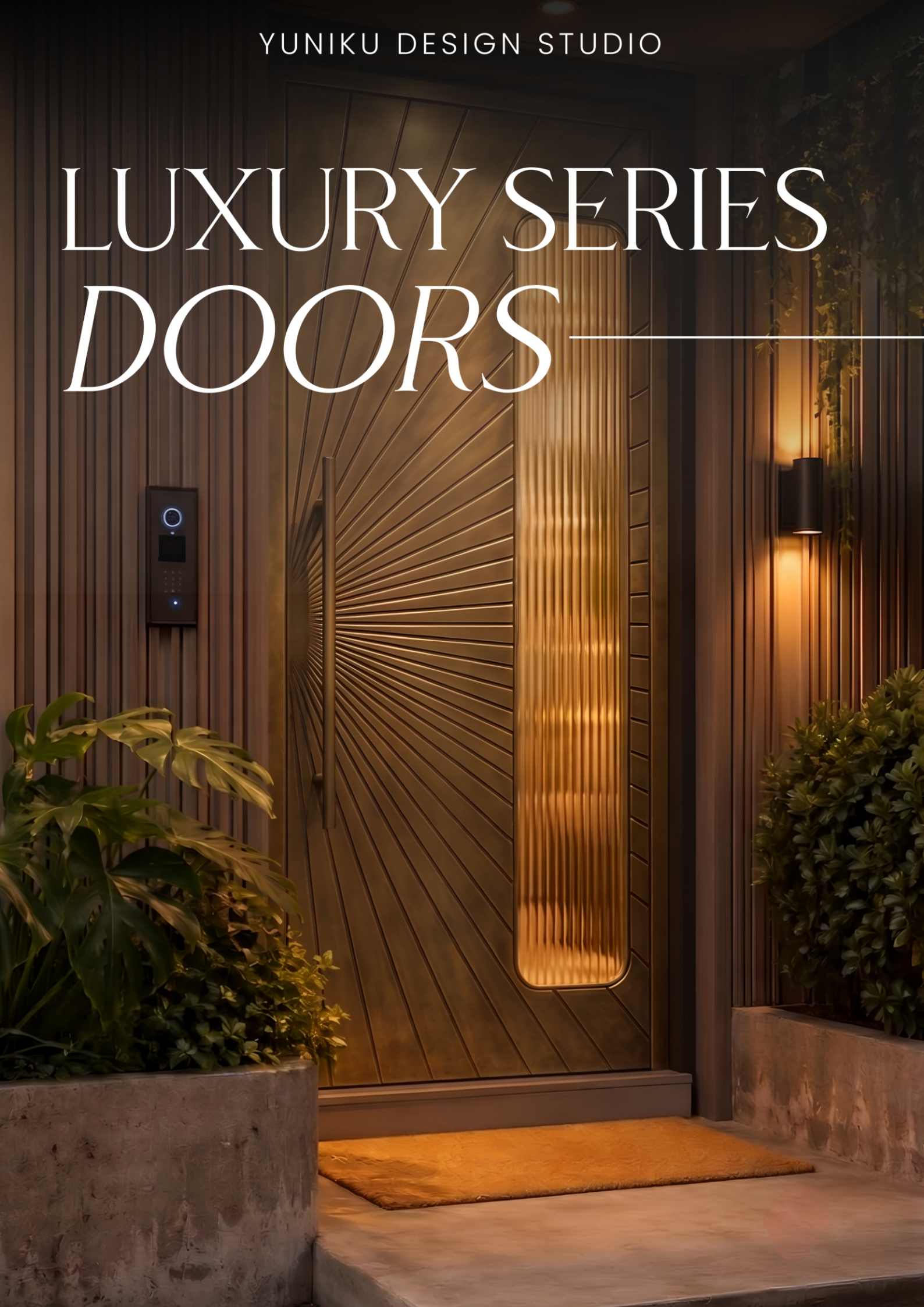


ITEM CODE : YDS-PRI-2523

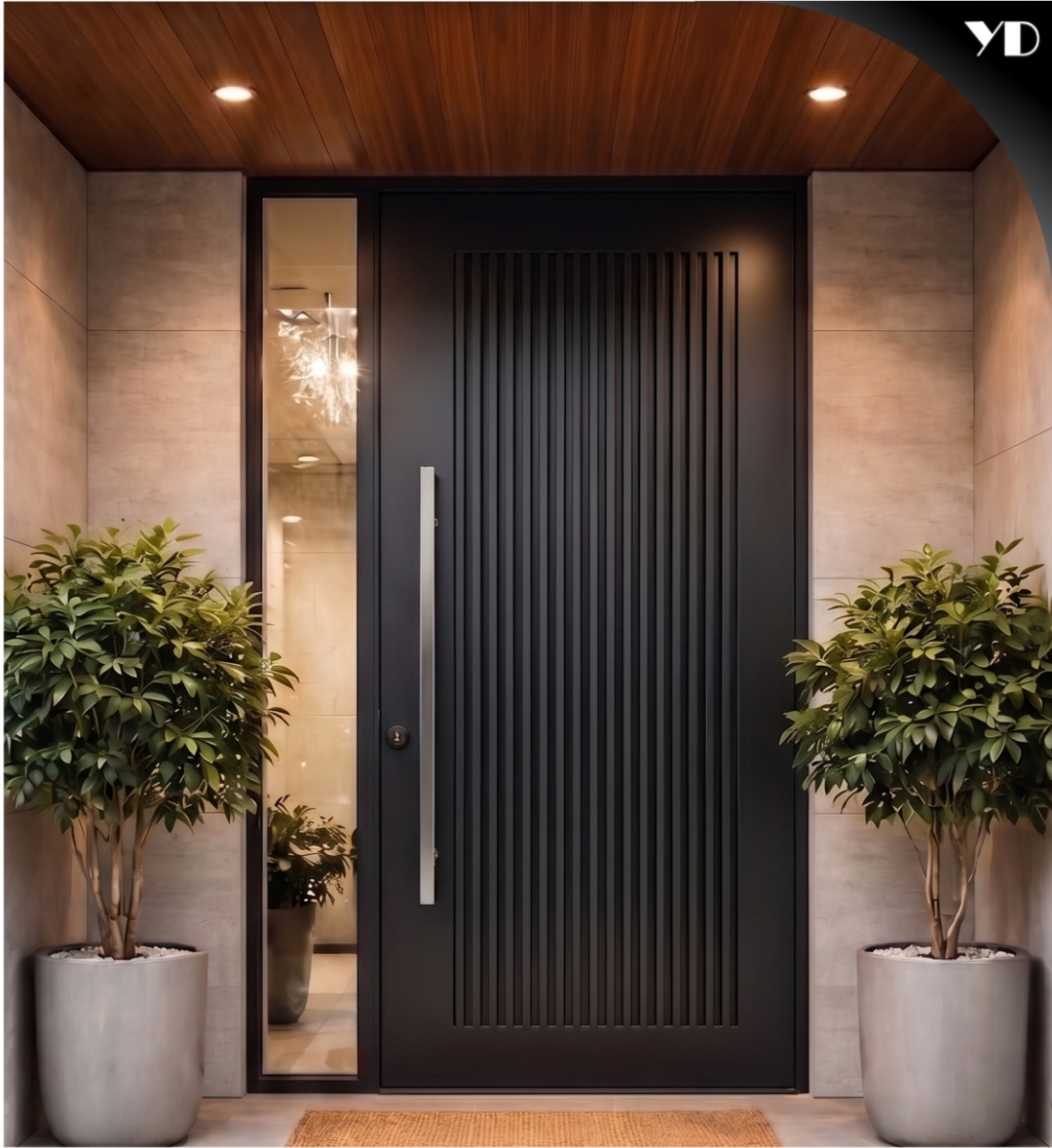
| | |
|---------------------|---|
| Size | 1050x2100mm (3.5x7ft) |
| Material | Mild Steel, Stainless Steel-304. |
| Accessories | Lock, SS Hinges, Handle, SS Door Stopper, Mosquito Mesh |
| Chargeable Features | Door Frame(Chaukhat), Electric Lock |

YUNIKU DESIGN STUDIO

LUXURY SERIES DOORS



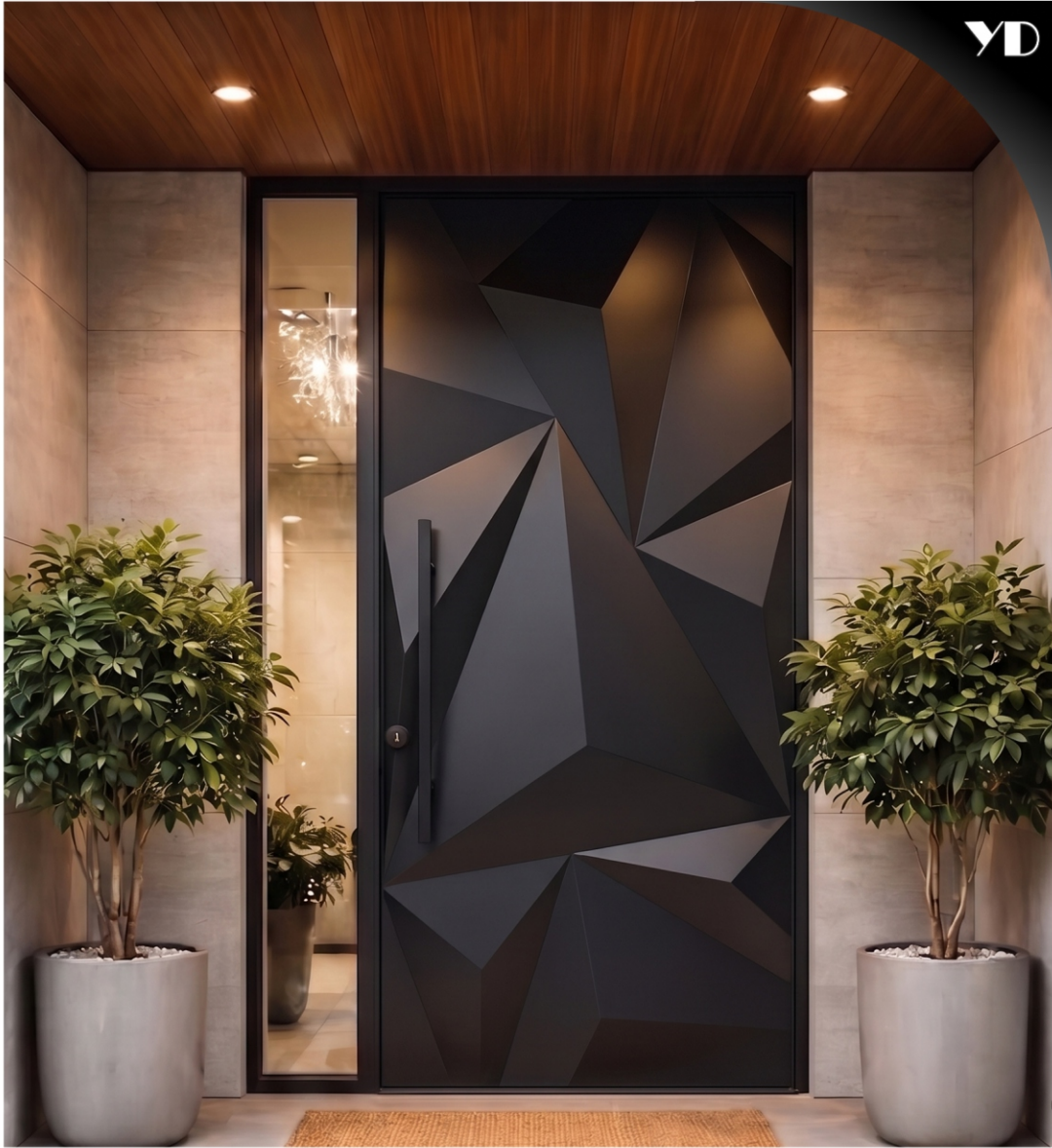
LUXURY SERIES



ITEM CODE : YDS-LUX-2501

| | |
|---------------------|---|
| Size | 1050x2100mm (3.5x7ft) |
| Material | Mild Steel, Stainless Steel-304. |
| Accessories | Lock, SS Hinges, Handle, SS Door Stopper, Mosquito Mesh |
| Chargeable Features | Door Frame(Chaukhat), Electric Lock |

LUXURY SERIES



ITEM CODE : YDS-LUX-2502

| | |
|---------------------|---|
| Size | 1050x2100mm (3.5x7ft) |
| Material | Mild Steel, Stainless Steel-304. |
| Accessories | Lock, SS Hinges, Handle, SS Door Stopper, Mosquito Mesh |
| Chargeable Features | Door Frame(Chaukhat), Electric Lock |

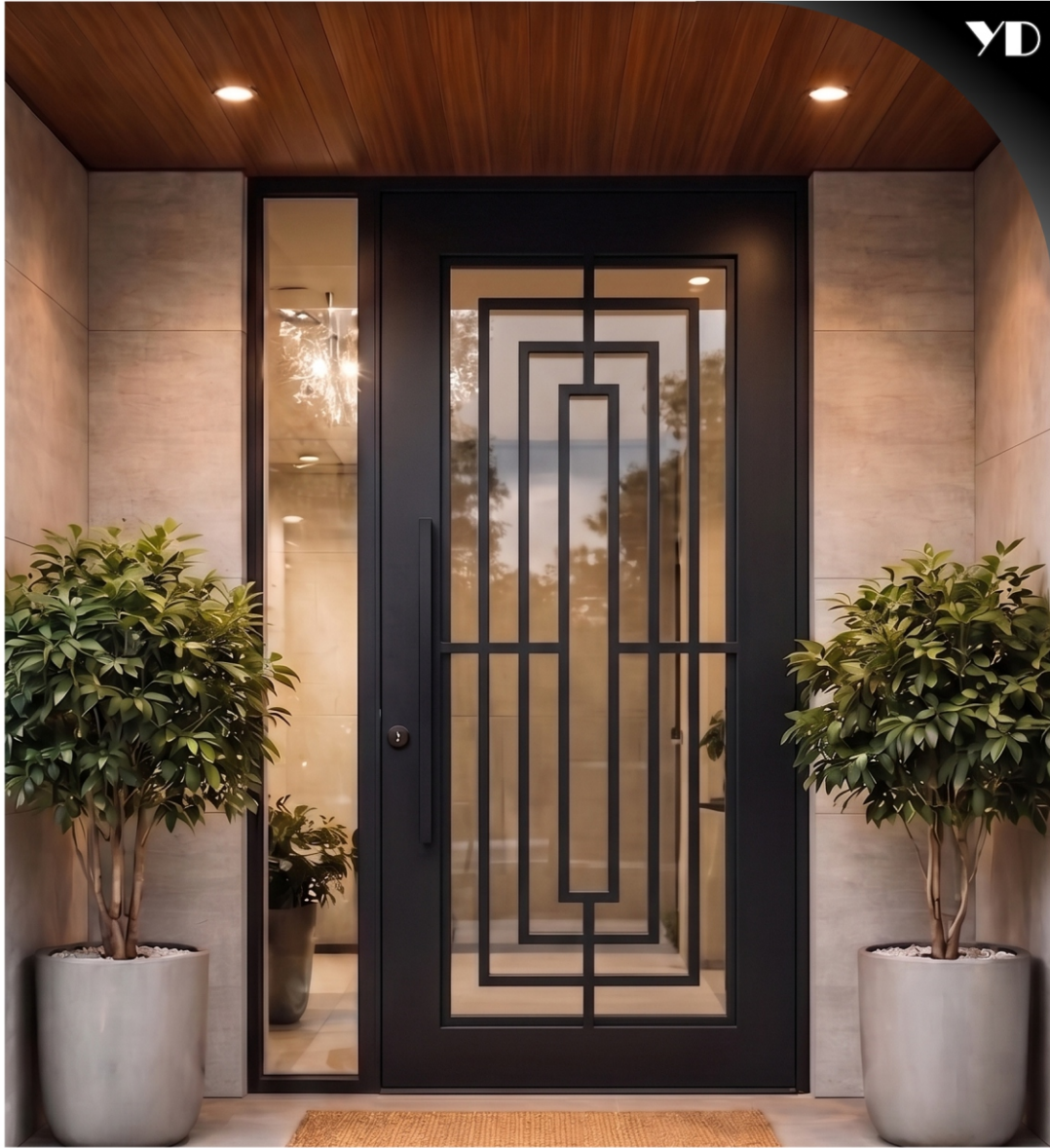
LUXURY SERIES



ITEM CODE : YDS-LUX-2503

| | |
|---------------------|---|
| Size | 1050x2100mm (3.5x7ft) |
| Material | Mild Steel, Stainless Steel-304. |
| Accessories | Lock, SS Hinges, Handle, SS Door Stopper, Mosquito Mesh |
| Chargeable Features | Door Frame(Chaukhat), Electric Lock |

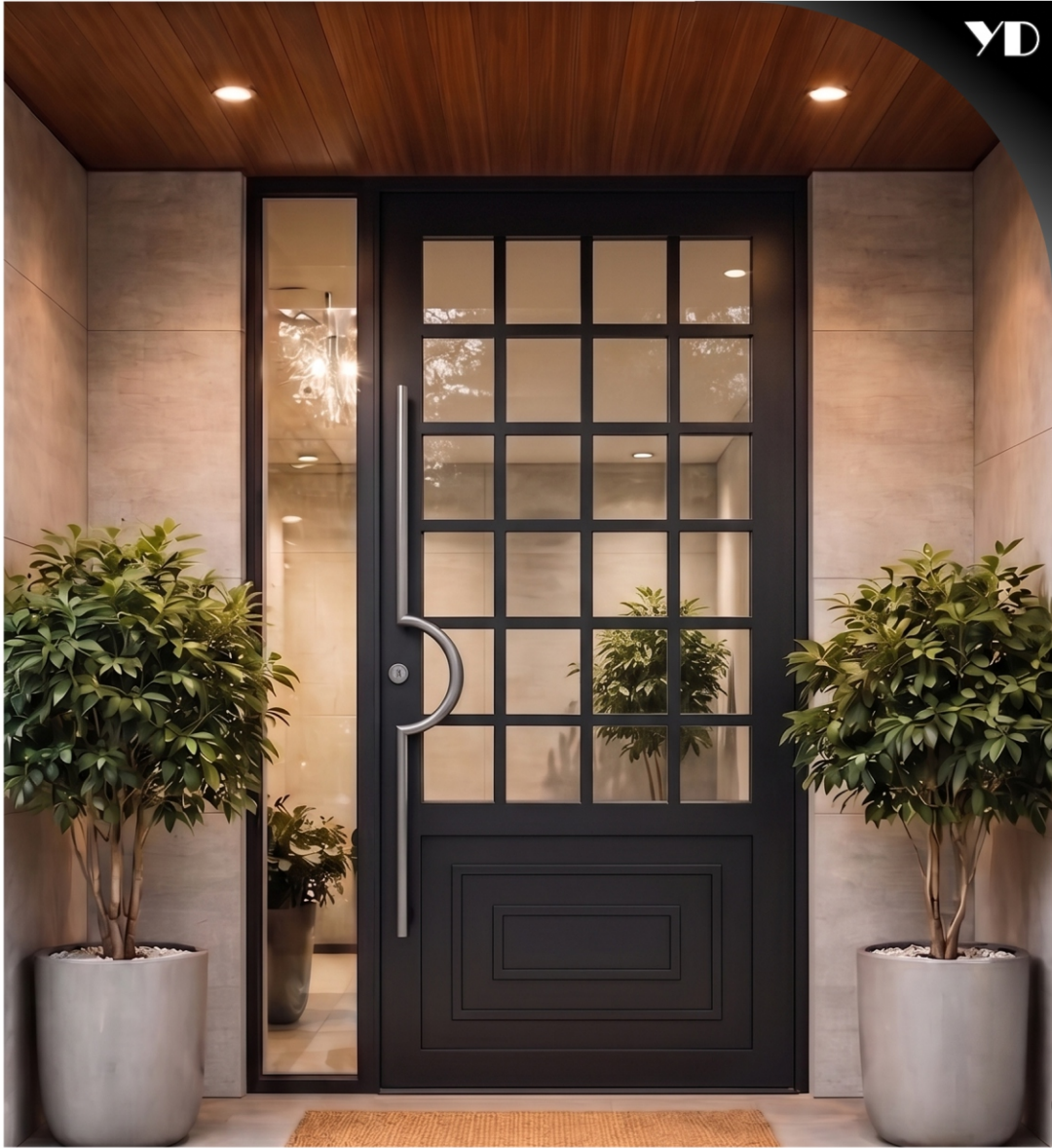
LUXURY SERIES



ITEM CODE : YDS-LUX-2504

| | |
|---------------------|---|
| Size | 1050x2100mm (3.5x7ft) |
| Material | Mild Steel, Stainless Steel-304. |
| Accessories | Lock, SS Hinges, Handle, SS Door Stopper, Mosquito Mesh |
| Chargeable Features | Door Frame(Chaukhat), Electric Lock |

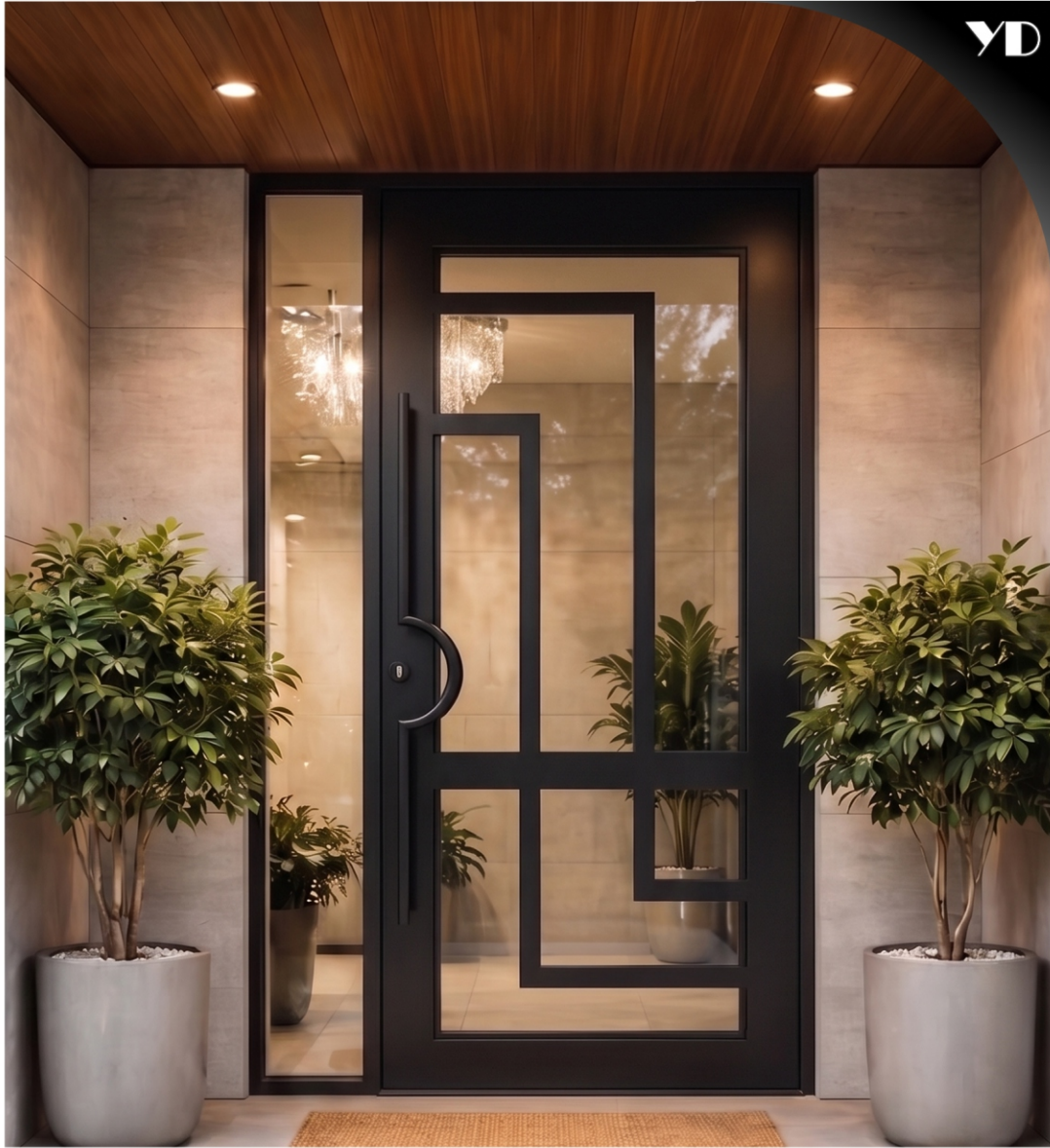
LUXURY SERIES



ITEM CODE : YDS-LUX-2505

| | |
|---------------------|---|
| Size | 1050x2100mm (3.5x7ft) |
| Material | Mild Steel, Stainless Steel-304. |
| Accessories | Lock, SS Hinges, Handle, SS Door Stopper, Mosquito Mesh |
| Chargeable Features | Door Frame(Chaukhat), Electric Lock |

LUXURY SERIES

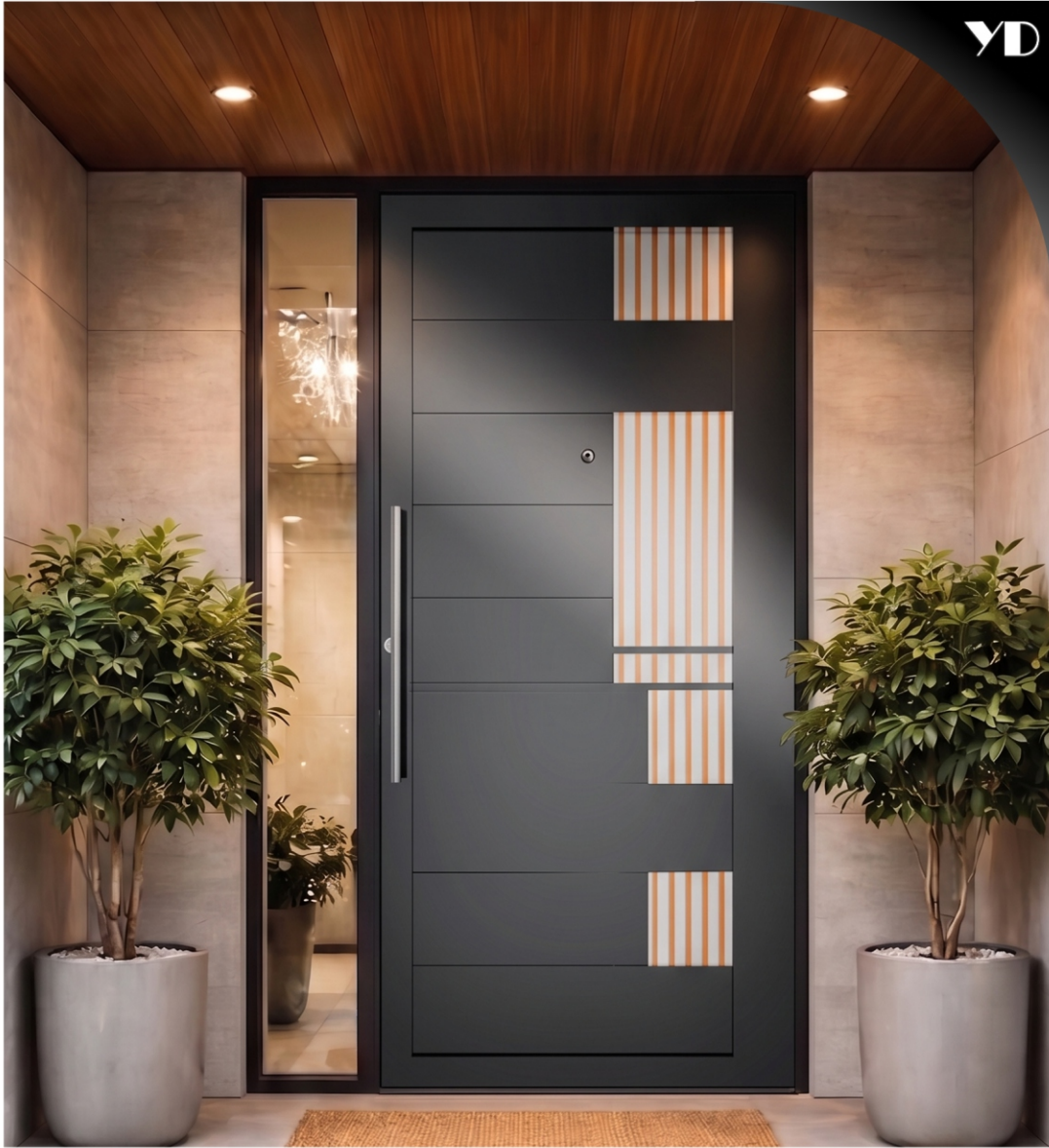


YD

ITEM CODE : YDS-LUX-2506

| | |
|---------------------|---|
| Size | 1050x2100mm (3.5x7ft) |
| Material | Mild Steel, Stainless Steel-304. |
| Accessories | Lock, SS Hinges, Handle, SS Door Stopper, Mosquito Mesh |
| Chargeable Features | Door Frame(Chaukhat), Electric Lock |

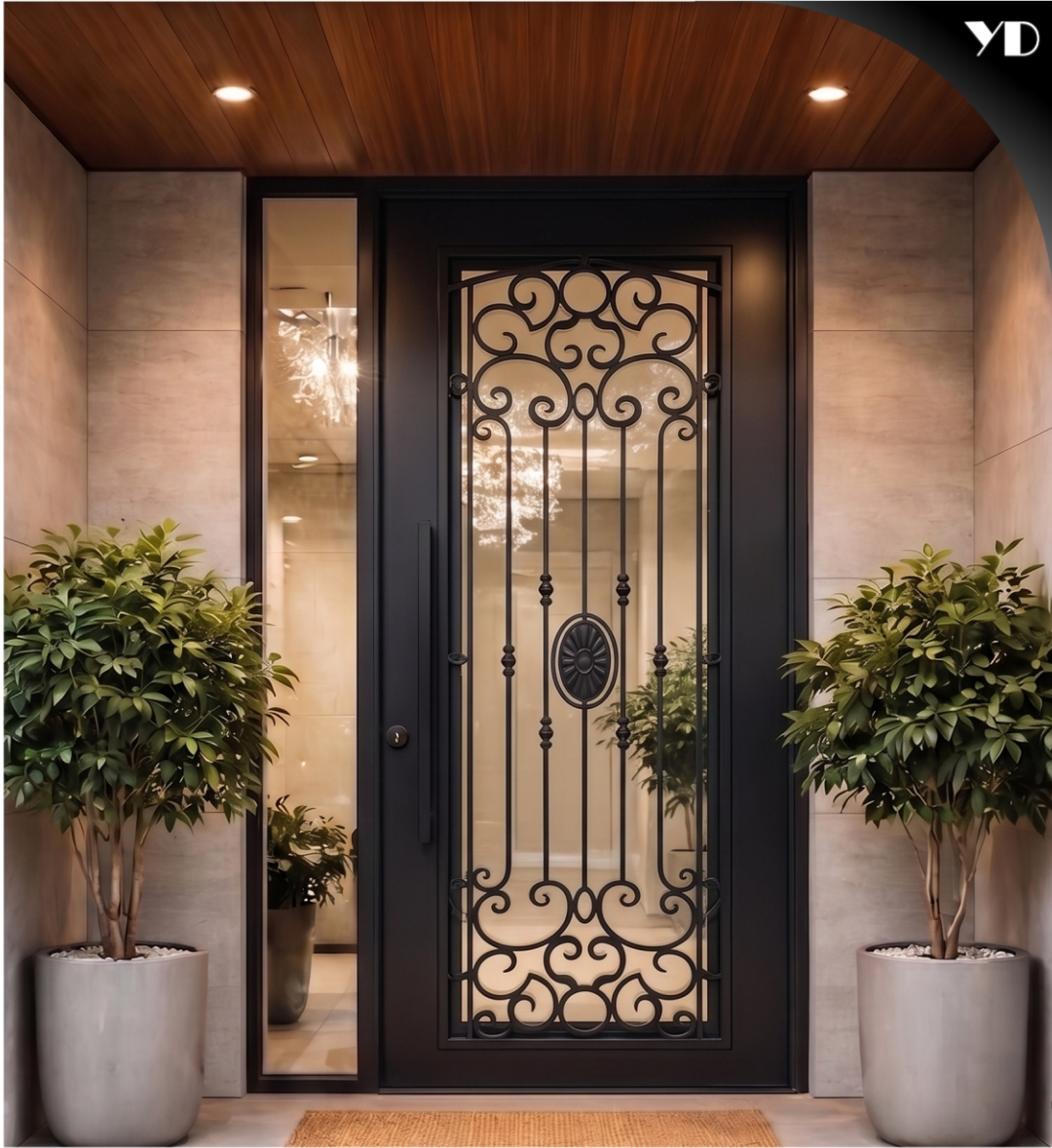
LUXURY SERIES



ITEM CODE : YDS-LUX-2507

| | |
|---------------------|---|
| Size | 1050x2100mm (3.5x7ft) |
| Material | Mild Steel, Stainless Steel-304. |
| Accessories | Lock, SS Hinges, Handle, SS Door Stopper, Mosquito Mesh |
| Chargeable Features | Door Frame(Chaukhat), Electric Lock |

LUXURY SERIES



ITEM CODE : YDS-LUX-2508

| | |
|---------------------|---|
| Size | 1050x2100mm (3.5x7ft) |
| Material | Mild Steel, Stainless Steel-304. |
| Accessories | Lock, SS Hinges, Handle, SS Door Stopper, Mosquito Mesh |
| Chargeable Features | Door Frame(Chaukhat), Electric Lock |

LUXURY SERIES



ITEM CODE : YDS-LUX-2509

| | |
|---------------------|---|
| Size | 1050x2100mm (3.5x7ft) |
| Material | Mild Steel, Stainless Steel-304. |
| Accessories | Lock, SS Hinges, Handle, SS Door Stopper, Mosquito Mesh |
| Chargeable Features | Door Frame(Chaukhat), Electric Lock |

LUXURY SERIES



ITEM CODE : YDS-LUX-2511

| | |
|---------------------|---|
| Size | 1050x2100mm (3.5x7ft) |
| Material | Mild Steel, Stainless Steel-304. |
| Accessories | Lock, SS Hinges, Handle, SS Door Stopper, Mosquito Mesh |
| Chargeable Features | Door Frame(Chaukhat), Electric Lock |

LUXURY SERIES



ITEM CODE : YDS-LUX-2512

| | |
|---------------------|---|
| Size | 1050x2100mm (3.5x7ft) |
| Material | Mild Steel, Stainless Steel-304. |
| Accessories | Lock, SS Hinges, Handle, SS Door Stopper, Mosquito Mesh |
| Chargeable Features | Door Frame(Chaukhat), Electric Lock |

LUXURY SERIES



ITEM CODE : YDS-LUX-2513

| | |
|---------------------|---|
| Size | 1050x2100mm (3.5x7ft) |
| Material | Mild Steel, Stainless Steel-304. |
| Accessories | Lock, SS Hinges, Handle, SS Door Stopper, Mosquito Mesh |
| Chargeable Features | Door Frame(Chaukhat), Electric Lock |

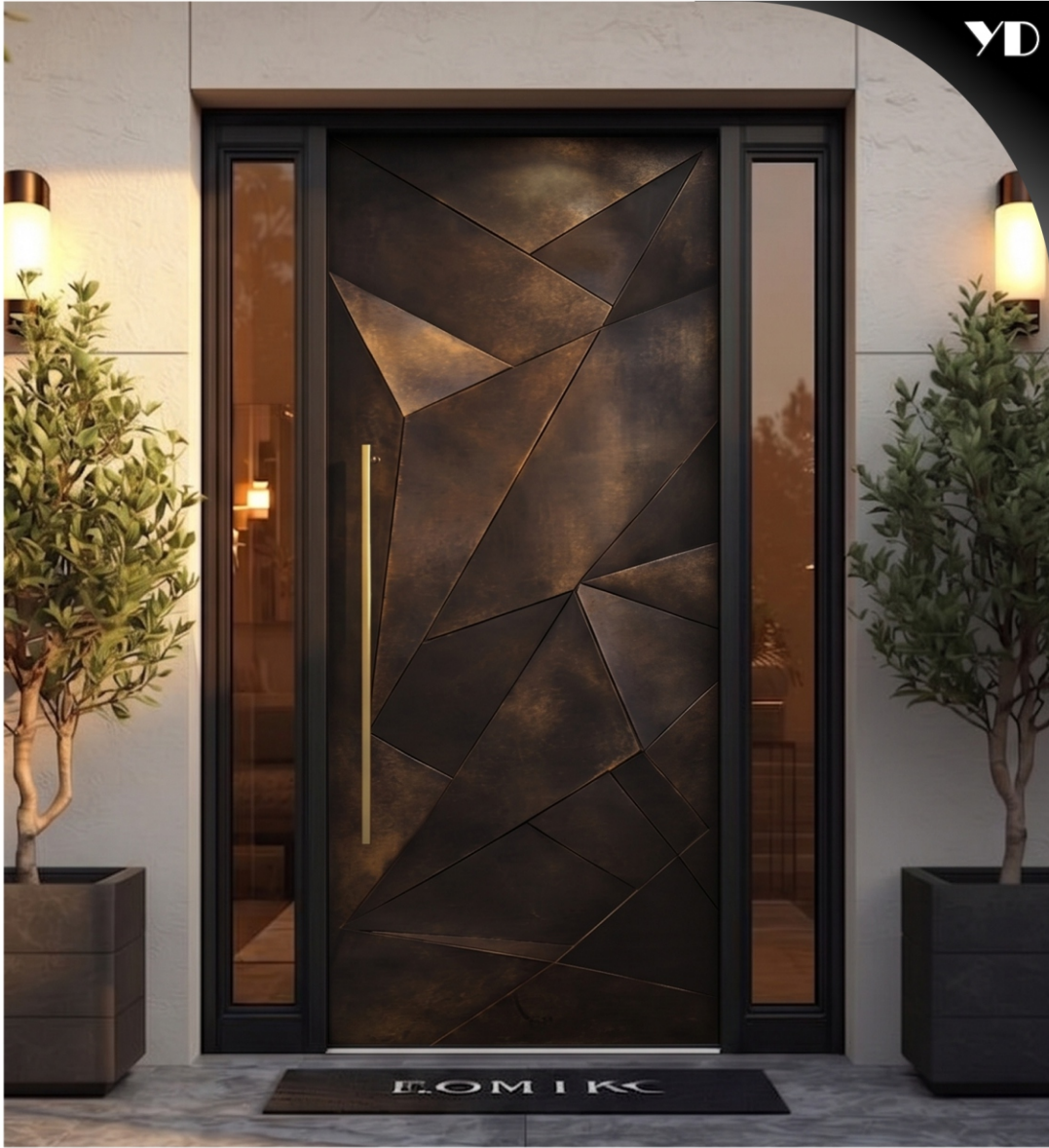
LUXURY SERIES



ITEM CODE : YDS-LUX-2514

| | |
|---------------------|---|
| Size | 1050x2100mm (3.5x7ft) |
| Material | Mild Steel, Stainless Steel-304. |
| Accessories | Lock, SS Hinges, Handle, SS Door Stopper, Mosquito Mesh |
| Chargeable Features | Door Frame(Chaukhat), Electric Lock |

LUXURY SERIES



ITEM CODE : YDS-LUX-2515

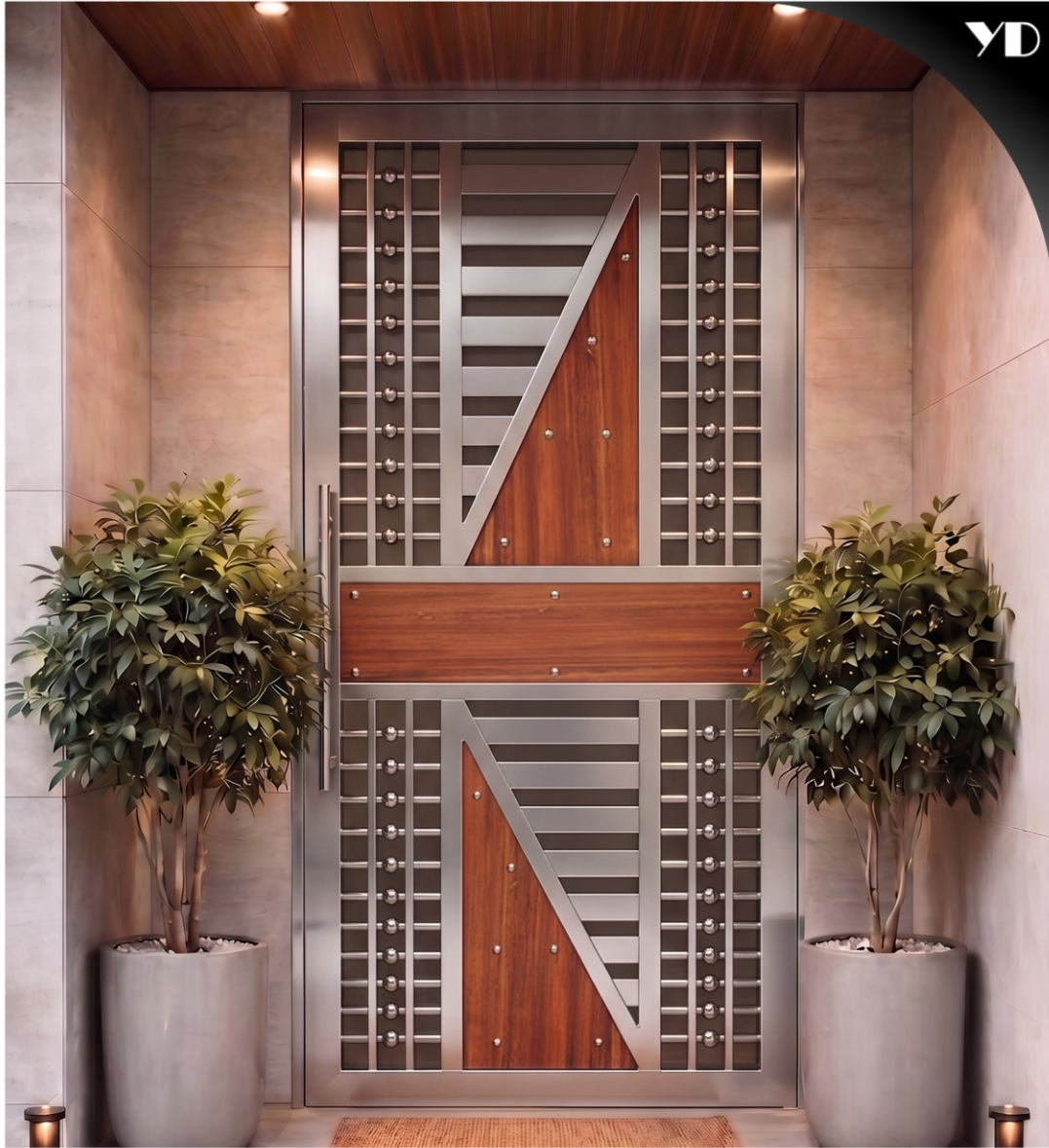
| | |
|---------------------|---|
| Size | 1050x2100mm (3.5x7ft) |
| Material | Mild Steel, Stainless Steel-304. |
| Accessories | Lock, SS Hinges, Handle, SS Door Stopper, Mosquito Mesh |
| Chargeable Features | Door Frame(Chaukhat), Electric Lock |

YUNIKU DESIGN STUDIO

STEEL SERIES *DOORS*



LUXURY SERIES



ITEM CODE : YDS-STL-2501

| | |
|---------------------|---|
| Size | 1050x2100mm (3.5x7ft) |
| Material | Mild Steel, Stainless Steel-304. |
| Accessories | Lock, SS Hinges, Handle, SS Door Stopper, Mosquito Mesh |
| Chargeable Features | Door Frame(Chaukhat), Electric Lock |

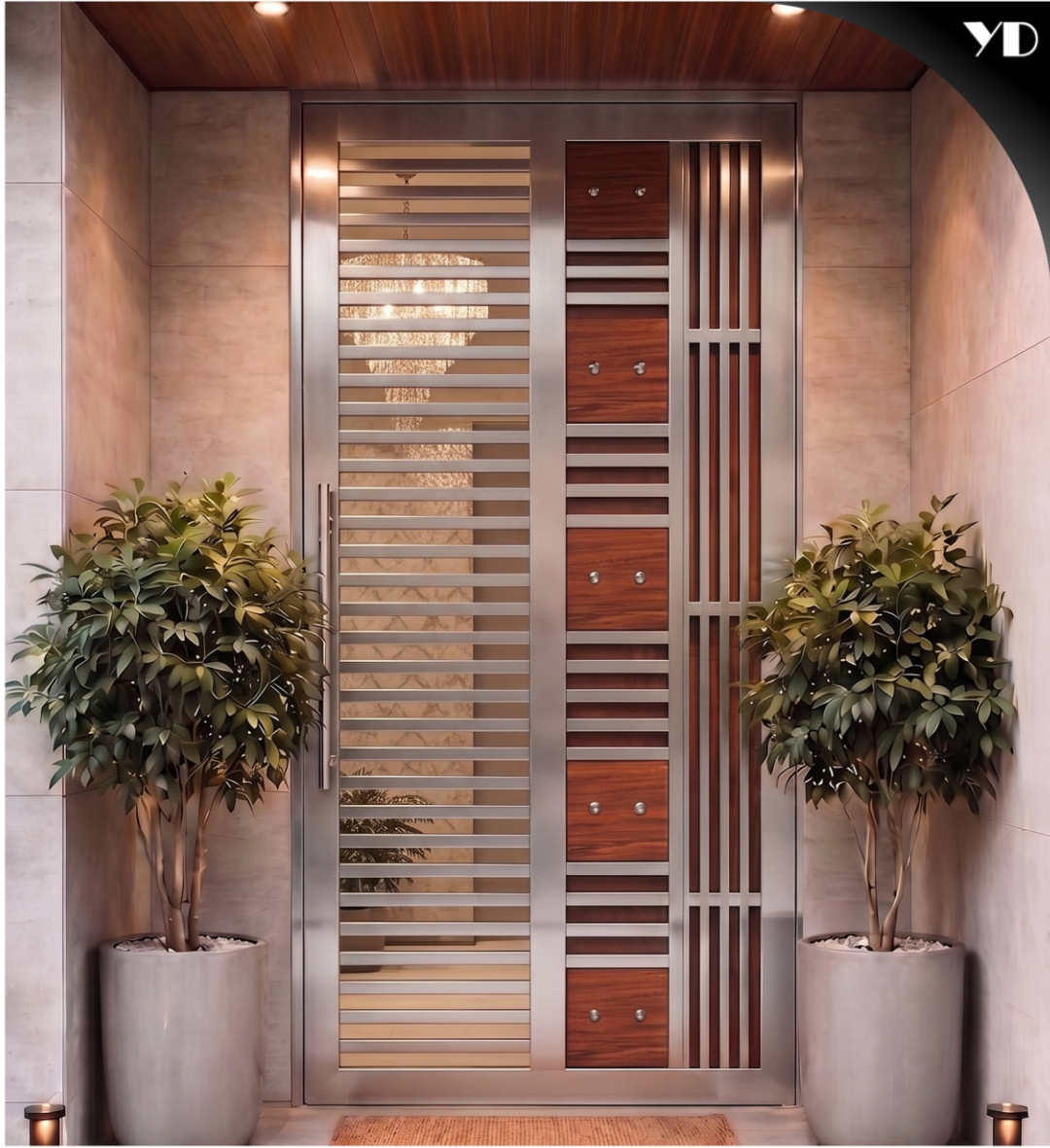
LUXURY SERIES



ITEM CODE : YDS-STL-2502

| | |
|---------------------|---|
| Size | 1050x2100mm (3.5x7ft) |
| Material | Mild Steel, Stainless Steel-304. |
| Accessories | Lock, SS Hinges, Handle, SS Door Stopper, Mosquito Mesh |
| Chargeable Features | Door Frame(Chaukhat), Electric Lock |

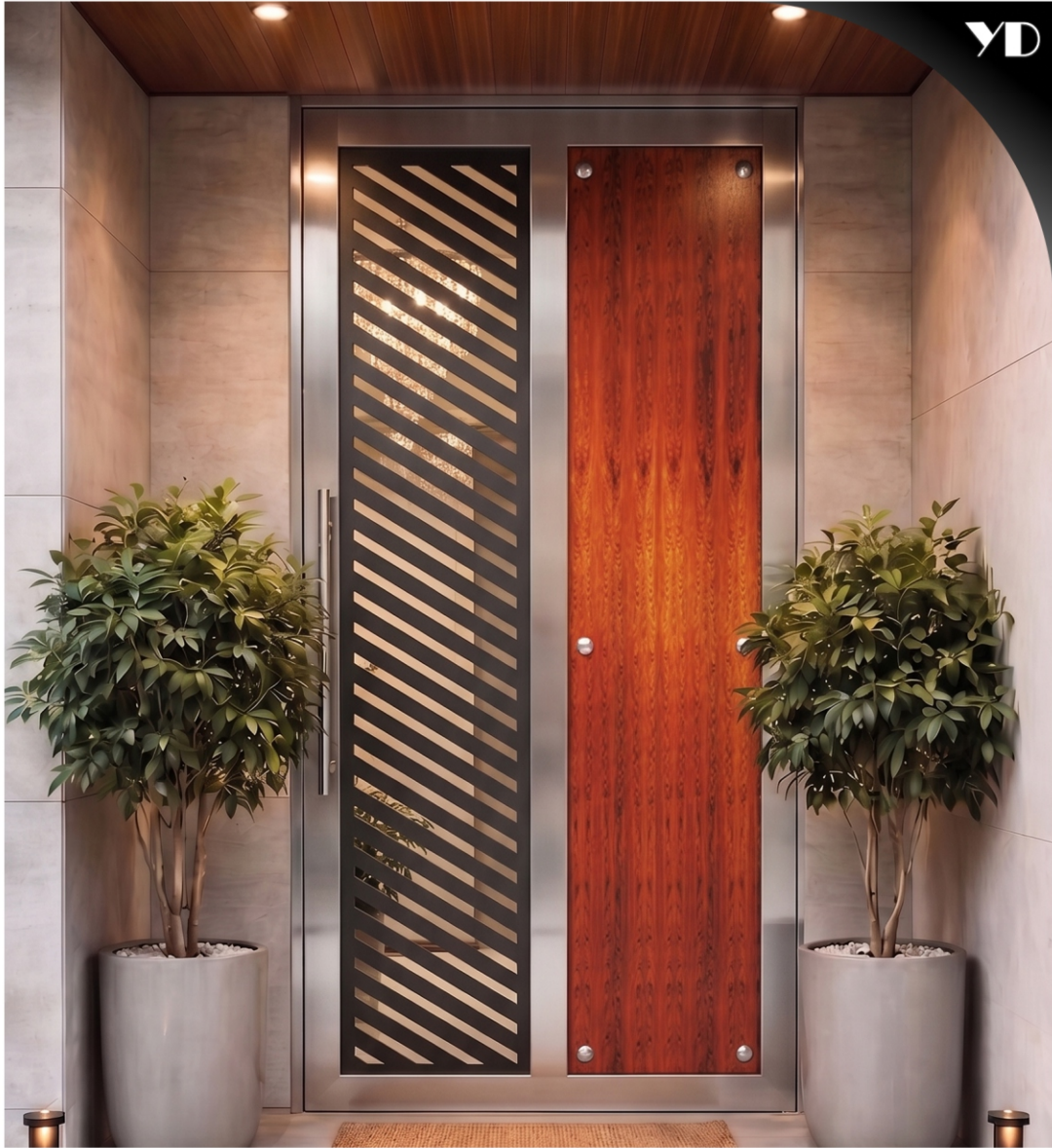
LUXURY SERIES



ITEM CODE : YDS-STL-2503

| | |
|---------------------|---|
| Size | 1050x2100mm (3.5x7ft) |
| Material | Mild Steel, Stainless Steel-304. |
| Accessories | Lock, SS Hinges, Handle, SS Door Stopper, Mosquito Mesh |
| Chargeable Features | Door Frame(Chaukhat), Electric Lock |

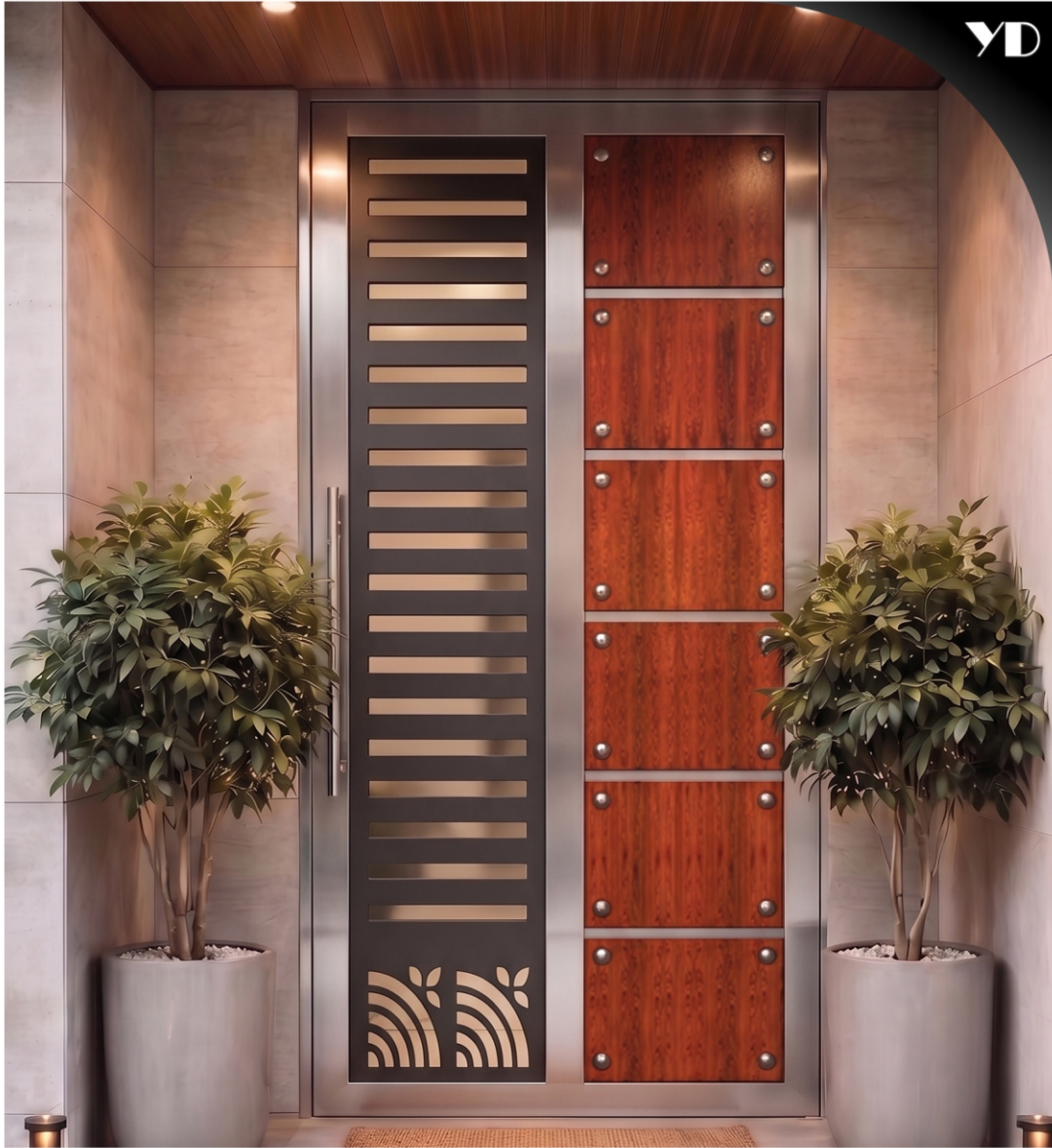
LUXURY SERIES



ITEM CODE : YDS-STL-2504

| | |
|---------------------|---|
| Size | 1050x2100mm (3.5x7ft) |
| Material | Mild Steel, Stainless Steel-304. |
| Accessories | Lock, SS Hinges, Handle, SS Door Stopper, Mosquito Mesh |
| Chargeable Features | Door Frame(Chaukhat), Electric Lock |

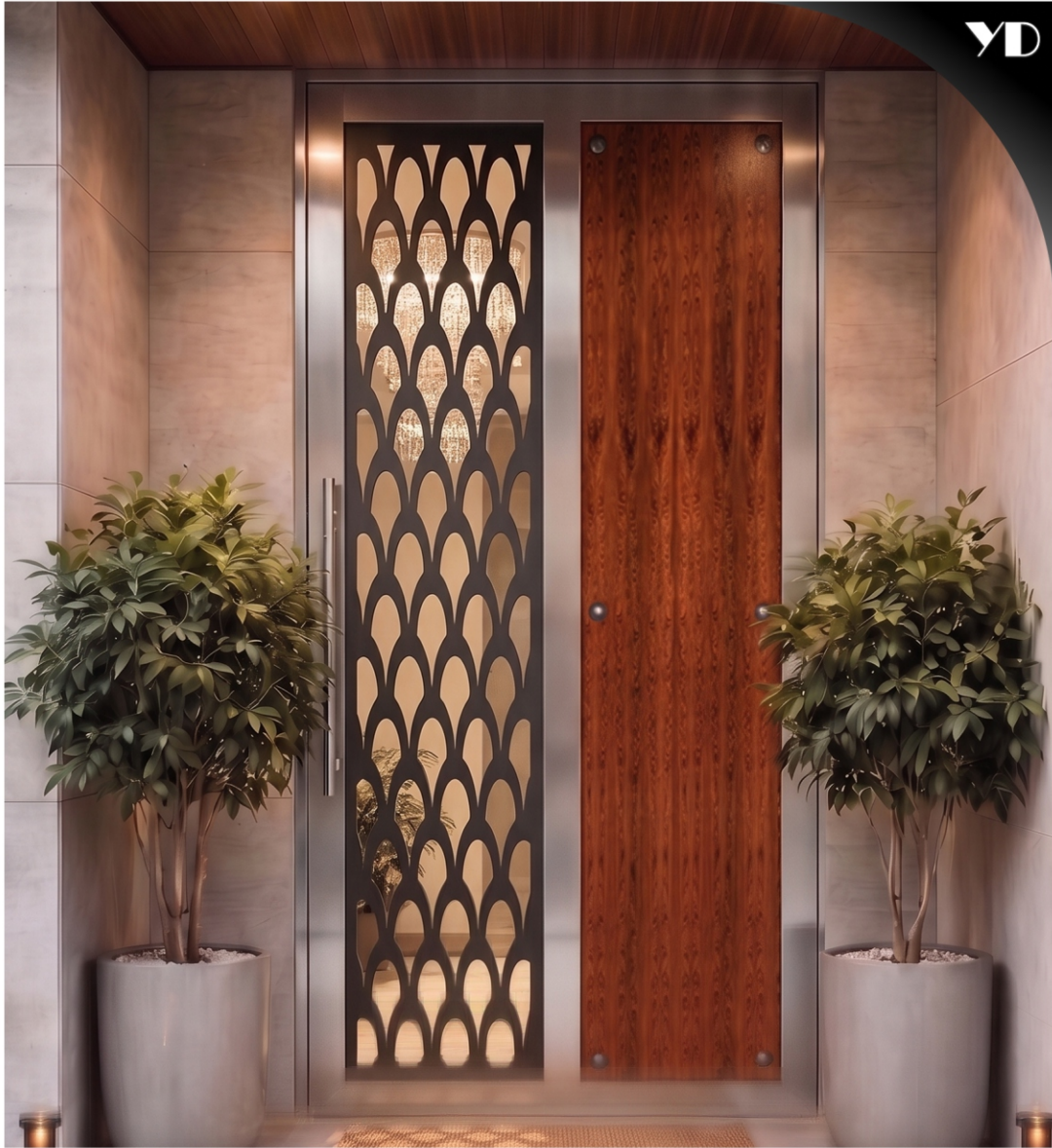
LUXURY SERIES



ITEM CODE : YDS-STL-2505

| | |
|---------------------|---|
| Size | 1050x2100mm (3.5x7ft) |
| Material | Mild Steel, Stainless Steel-304. |
| Accessories | Lock, SS Hinges, Handle, SS Door Stopper, Mosquito Mesh |
| Chargeable Features | Door Frame(Chaukhat), Electric Lock |

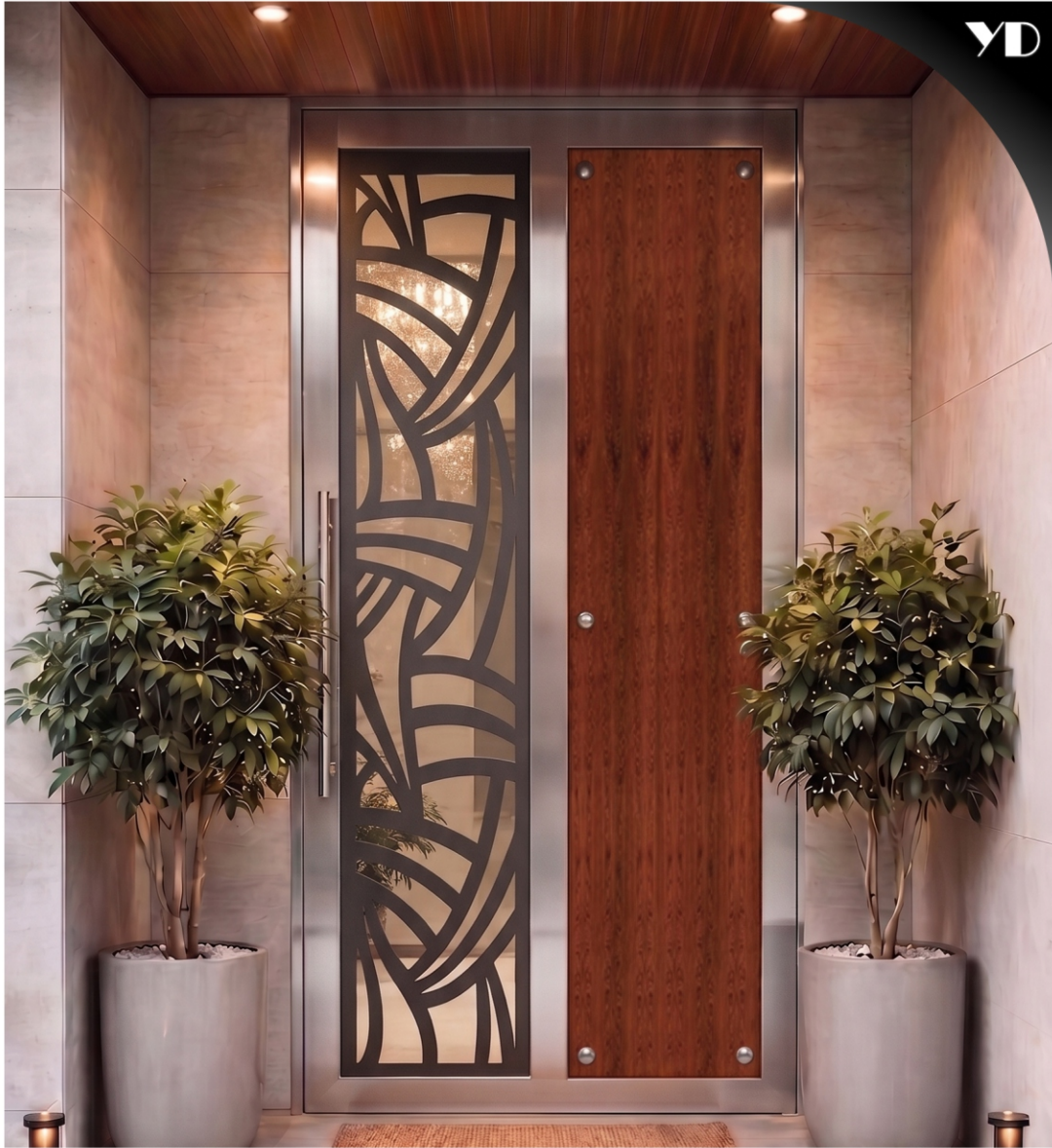
LUXURY SERIES



ITEM CODE : YDS-STL-2506

| | |
|---------------------|---|
| Size | 1050x2100mm (3.5x7ft) |
| Material | Mild Steel, Stainless Steel-304. |
| Accessories | Lock, SS Hinges, Handle, SS Door Stopper, Mosquito Mesh |
| Chargeable Features | Door Frame(Chaukhat), Electric Lock |

LUXURY SERIES



ITEM CODE : YDS-STL-2507

| | |
|---------------------|---|
| Size | 1050x2100mm (3.5x7ft) |
| Material | Mild Steel, Stainless Steel-304. |
| Accessories | Lock, SS Hinges, Handle, SS Door Stopper, Mosquito Mesh |
| Chargeable Features | Door Frame(Chaukhat), Electric Lock |

COLOR SHADES



RAL 9003
SIGNAL WHITE



RAL 9010
PURE WHITE



RAL 9016
TRAFFIC WHITE



RAL 7003
MOOSE GREY



RAL 7002
OLIVE GREY



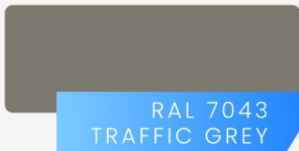
RAL 7032
PEBBLE GREY



RAL 7035
LIGHT GREY



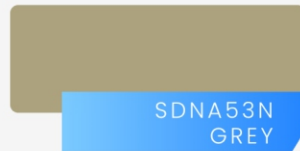
RAL 7035
DUST GREY



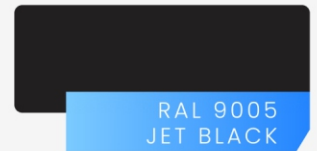
RAL 7043
TRAFFIC GREY



RAL 7045
TELE GREY



SDNA53N
GREY



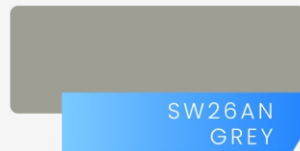
RAL 9005
JET BLACK



RAL 9006
WHITE ALUMINIUM



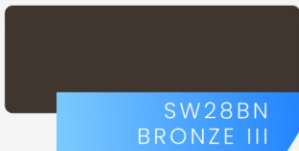
RAL 9007
PURE ALUMINIUM



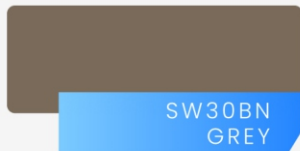
SW26AN
GREY



SW28DN
GREY



SW28BN
BRONZE III



SW30BN
GREY



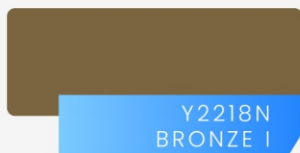
SW31BN
GREY



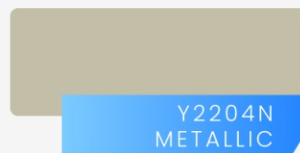
Y2206N
SPLENDOR



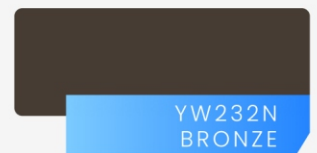
RAL 7039
QUARTZ GREY



Y2218N
BRONZE I



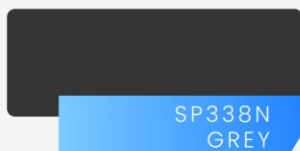
Y2204N
METALLIC



YW232N
BRONZE



Y2208N
METALLIC



SP338N
GREY



Y2219N
METALLIC

HARDWARES



MAGNETIC DOOR STOPPER



CYLINDER WITH THUMB TURN



SMART LOCK



HALF CYLINDER



EYE VIEWER



ELECTRIC LOCK



HINGES

DOOR HANDLES

YD



DH2301



DH2304



DH2305



DH2306



DH2309



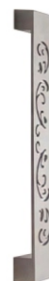
DH2308



DH2303



DH2311



DH2312

DOOR HANDLES

YD



DH2313



DH2314



DH2315



DH2316



DH2317



DH2318

DOOR HANDLES

YD



DH2319



DH2320



DH2321



DH2322



DH2323



DH2324

YUNIKU DESIGN STUDIO

THANK
YOU!

Contact Us At : 9873372235, 9650135305

📍 Factory Address : Sector 4, Noida



[_yunikudesignstudio](#)



[Yuniku Design Studio](#)